



KPMG Taseer Hadi & Co.
Chartered Accountants

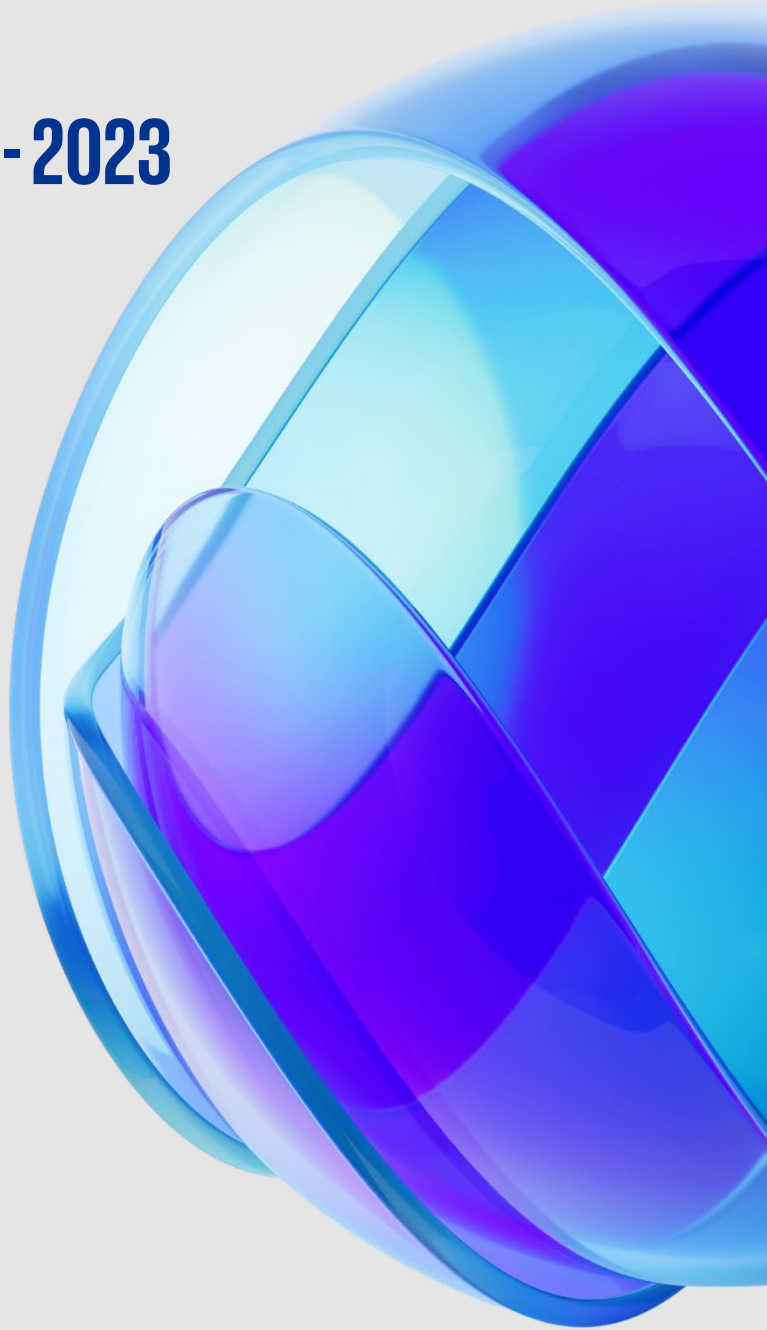
KPMG in Pakistan

Transparency Report - 2023

October 2023

—

home.kpmg/pk





KPMG Taseer Hadi & Co.

Contents

1	Message from Senior Partner	1
2	Living our culture and values	2
2.1	Fostering the right culture, starting with tone at the top	2
2.1.1	Tone at the top	2
2.1.2	System of quality management	4
2.1.3	Leadership responsibilities for quality and risk management	5
2.2	Clearly articulated strategy focused on quality, consistency, trust and growth	7
2.2.1	Our business	7
2.2.2	Our strategy	7
2.3	Defined accountabilities, roles and responsibilities, including for leadership	7
2.3.1	Legal structure	7
2.3.2	Name, ownership and legal Relationships	8
2.3.3	Responsibilities and obligations of member firms	8
2.4	Overseen using robust governance structures	9
2.4.1	Governance structure	9
3	Applying expertise and knowledge	11
3.1	Methodology aligned with professional standards, laws and regulations	11
3.1.1	Consistent audit and assurance methodology and tools	11
3.2	Deep technical expertise and knowledge	12
3.2.1	Access to specialist network	12
3.2.2	Our commitment to audit quality during significant external events	12
3.3	Quality and risk management manual	13
4	Embracing digital technology	14
4.1	Intelligent, standards-driven audit workflow	14
4.1.1	Evolving our audit workflows	14
4.2	KPMG Clara	14
4.2.1	Client confidentiality, information security, and data privacy	16
5	Nurturing diverse skilled teams	17



KPMG Taseer Hadi & Co.

5.1	Recruiting appropriately qualified and skilled people, including specialists, with diversity of perspective and experience	17
5.1.1	Recruitment	17
5.1.2	Inclusion, diversity & equity programs	17
5.1.3	Reward and Promotion	18
5.2	Assigning an appropriately qualified team	18
5.3	Investing in data centric skills – including data mining, analysis and visualization	19
5.4	Focused learning and development on technical expertise, professional acumen, and leadership skills	20
5.4.1	Commitment to technical excellence and quality service delivery	20
5.4.2	Lifetime learning strategy	20
5.4.3	Licensing and mandatory requirements for IFRS Standards and US GAAP engagements	21
5.5	Recognizing quality	21
5.5.1	Personal development	21
6	Associating with the right clients and engagements	23
6.1	Following the client and engagement acceptance and continuance policies	23
6.2	Accepting appropriate clients and engagements	23
6.2.1	Client evaluation	23
6.2.2	Engagement evaluation	23
6.2.3	Continuance process	24
6.2.4	Withdrawal process	24
6.2.5	Managed portfolio of clients	25
7	Being independent and ethical	26
7.1	Acting with integrity and living our values	26
7.2	Maintaining an objective, independent and ethical mindset, in line with the Code	27
7.2.1	Personal financial independence	27
7.2.2	Employment relationships	28
7.2.3	Firm financial Independence	28
7.2.4	Business relationships/suppliers	29
7.2.5	Independence clearance process	29
7.2.6	Independence training and confirmations	29
7.2.7	Non-audit services	30



KPMG Taseer Hadi & Co.

7.2.8	Fee dependency	31
7.2.9	Resolving conflicts of interest	31
7.2.10	Independence breaches	32
7.2.11	Partner and firm rotation	32
7.3	Zero tolerance of bribery and corruption	33
8	Performing quality engagements	34
8.1	Consulting when appropriate	34
8.1.1	Encouraging a culture of consultation	34
8.1.2	Technical consultation and global resources	34
8.2	Critically assessing audit evidence using professional judgement and skepticism	36
8.3	Direct, coach, supervise and review	36
8.3.1	Embedding ongoing coaching, supervision and review	36
8.3.2	Engagement quality control (EQC) reviewers	37
8.4	Appropriately support and document conclusions	37
8.4.1	Reporting	37
8.4.2	Engagement documentation	38
9	Assessing risks to quality	39
10	Communicating effectively	40
10.1	Provide insights, and maintain open and honest two-way communication	40
10.2	Conduct and follow-up on Global People Survey (GPS)	41
11	Monitoring and remediation	42
11.1	Rigorously monitor and measure quality	42
11.1.1	Commitment to continuous improvement	42
11.1.2	Internal monitoring and compliance programs	42
11.2	Obtain, evaluate and act on stakeholder feedback	45
11.2.1	Regulators	45
11.2.2	Client feedback	47
11.2.3	Monitoring of complaints	47
11.3	Perform root cause Analysis (RCA)	47
12	Financial Information	48
12.1	KPMG Network Revenue	48
12.2	KPMGTH Revenue	48



KPMG Taseer Hadi & Co.

13	Partner remuneration	49
13.1	Partners' profit share	49
13.2	Drawings	49
14	Network arrangements	50
14.1	Legal structure	50
14.2	Responsibilities and obligations of member firms	51
14.3	Professional Indemnity Insurance	51
14.4	Governance structure	51
15	Statement by the Board of KPMG Taseer Hadi & Co. on the effectiveness of quality controls and independence	54



KPMG Taseer Hadi & Co.

1 Message from Senior Partner

As a member of the KPMG network, KPMG Taseer Hadi & Co. (KPMGTH) shares a common Purpose – to Inspire Confidence and Empower Change – with member firms around the globe. Based on this Purpose, we aim to establish the reliability of information through auditing and accounting services and support the transformation of companies and society towards sustainable growth.

Consistent with the previous year, this report focuses on efforts at KPMGTH to improve audit quality, the foundation of which is KPMG's globally consistent quality management framework.

We have also updated the explanation regarding our system of quality management, because we have started to operate a strengthened system of quality management, to be in compliance with the new standards of quality management of audit firms (ISQM 1 and its equivalent national standards) for the period ending September 30, 2023.

Amir Jamil Abbasi
Senior Partner

KPMG Taseer Hadi & Co.

2 Living our culture and values

It's not just what we do at KPMG that matters, we also pay attention to how we do it. Our Values are our core beliefs, guiding and unifying our actions and behaviors. Shared across every level and in every country, jurisdiction and territory in which we operate, they are the foundation of our unique culture.

2.1 Fostering the right culture, starting with tone at the top

2.1.1 Tone at the top

KPMG global leadership, working with regional and member firm leadership, plays a critical role in establishing our commitment to quality and the highest standards of professional excellence. A culture based on integrity, accountability, quality, objectivity, independence, and ethics is essential in an organization that carries out audits and other services on which stakeholders rely.

At KPMGTH we promote a culture in which consultation is encouraged and recognized as a strength.

We communicate our commitment to clients, stakeholders, and society at large to earn the public's trust.

Our Values lie at the heart of the way we do things. To do the right thing, the right way. Always. They form the foundation of a resilient culture ready to meet challenge with integrity, so we never lose sight of our principal responsibility to protect the public interest. And they propel us forward — through our work and the example we set — as we inspire confidence and empower change throughout the world.

KPMG is committed to quality and service excellence in all that we do, helping to bring our best to clients and earning the public's trust through our actions and behaviors both professionally and personally.

Our Values guide our behaviors day-to-day, informing how we act, the decisions we make, and how we work with each other, our clients, companies that we audit, and all of our stakeholders.

Integrity: We do what is right.

Excellence: We never stop learning and improving.

Courage: We think and act boldly.



KPMG Taseer Hadi & Co.

Together: We respect each other and draw strength from our differences.

For Better: We do what matters.

Outlined in KPMG's Global Code of Conduct ("the Code") are the responsibilities all KPMG personnel have to each other, the public and our clients. It shows how our Values inspire our greatest aspirations and guide all our behaviors and actions. It defines what it means to work at and be part of KPMG, as well as our individual and collective responsibilities.

Everyone at KPMG is held accountable to behave in consistent with the Code and is required to confirm their compliance with it. All KPMG personnel are required to take annual training covering the Code. We are committed to holding ourselves accountable for behaving in a way that is consistent with the Code. Individuals are encouraged to speak up if they see something that makes them uncomfortable or that is not in compliance with the Code, or our Values.

Everyone at KPMG is required to report any activity that could potentially be illegal or in violation of our Values, KPMG policies, applicable laws, regulations; or professional standards.

To safeguard this principle of holding each other accountable, each KPMG firm is required to establish, communicate and maintain clearly defined channels to allow KPMG personnel and third parties to make inquiries about, raise concerns in relation to, provide feedback on, and notify, reportable matters, without fear of reprisal, in accordance with applicable law or regulation.

The KPMG International hotline is a further mechanism for KPMG personnel, clients and other third parties to confidentially report concerns they have relating to certain areas of activity by KPMG International, activities of KPMG firms or KPMG personnel. We take reports received by the International hotline seriously, and for each of them we respond, and take appropriate action.

All KPMG firms and personnel are prohibited from retaliating against individuals who have the courage to speak up in good faith. Retaliation is a serious violation of the Code, and any person who takes retaliatory action will be subject to their firm's disciplinary policy

The Global People Survey provides KPMGTH leadership and KPMG International leadership with results related to upholding the KPMG Values. KPMGTH and KPMG International monitor the results and take appropriate actions to communicate and respond to any findings.

KPMG Taseer Hadi & Co.

2.1.2 System of quality management

Audit quality is foundational to instilling confidence and public trust in the capital markets and it remains our highest priority.

Tone at the top, leadership, and a clear set of Values and conduct are essential to set the framework for quality. The quality of each audit rests on a foundational system of quality management.

Across our global organization we have strengthened the consistency and robustness of our system of quality management that enables compliance with the International System on Quality Management Standard 1 (ISQM 1), issued by the International Auditing and Assurance Standards Board (IAASB), which took effect on 15 December 2022. We consider this a transformational and fundamental change for KPMG firms.

Our globally consistent approach to ISQM 1 drives the robustness of our responses to the risks of achieving the quality objectives set out in the standard. For each component in the standard, we have established minimum required quality objectives, quality risks and responses for all KPMG firms.

KPMG International has established a risk assessment process required to be used by KPMG firms in identifying additional firm specific quality objectives, quality risks, and responses and requirements for testing and evaluation of their system of quality management together with guidance, tools and templates to support the consistent implementation of ISQM 1 across KPMG firms.

The new requirements apply to all KPMG firms within our global organization. The objective of this centralized approach is to drive the consistency, robustness, and accountability of responses within KPMG firm's processes.

In preparation for ISQM 1, we adopted a new Global Quality Framework to better outline how we deliver quality at KPMG, and how everyone at KPMG is accountable for its delivery. The principle of 'Perform quality engagements' sits at the core along with our commitment to continually monitor and remediate our processes as necessary.

The Global Quality Framework also meets the requirements of the current International Standards on Quality Control (ISQC 1), issued by the International Auditing and Assurance Standards Board (IAASB) and the International Code of Ethics for Professional Accountants (including International Independence Standards)



KPMG Taseer Hadi & Co.

issued by the International Ethics Standards Board for Accountants (IESBA), which apply to professional services firms that perform audits of financial statements.

This Transparency Report summarizes KPMG's approach to audit quality, it may also be useful for stakeholders interested in member firms' Tax and Advisory services, as many KPMG quality control procedures and processes are cross-functional and apply equally to all services offered.

2.1.3 Leadership responsibilities for quality and risk management

KPMGTH demonstrates commitment to integrity, quality, objectivity, independence, and ethics, and communicates our focus on quality to clients, stakeholders and society. Our leadership plays a critical role in setting the right tone and leading by example — demonstrating an unwavering commitment to the highest standards of professional excellence and championing and supporting major initiatives.

Our leadership team is committed to building a culture based on integrity, quality, objectivity, independence, and ethics, demonstrated through their actions.

KPMGTH is required to seek input from the chair of the relevant Global Steering Group or his/her delegee on the performance of certain leaders within KPMGTH whose role most closely aligns with the activities of the Global Steering Group. Input is sought as part of the annual performance process and is based on an assessment of the leader's performance, which includes matters of public interest, audit quality and risk management activities.

The following individuals have leadership responsibilities for quality and risk management at KPMGTH.

Board and Senior Partner

The Board and Senior Partner approves the establishment of quality and compliance procedures including the compliance with laws, rules, regulations, and professional standards. They also monitor the firm's compliance with these procedures on a regular basis.

Risk Management Partner (RMP) and Ethics and Independence Partner

The Risk Management Partner (RMP) is responsible for the direction and execution of risk, compliance, and quality control in KPMGTH. The RMP is a member of KPMGTH's Executive Committee and Board and has a direct reporting line to the Senior Partner. The RMP consults, as appropriate, with the Senior Partner, the Regional Risk Management Partner, Global Quality & Risk Management resources, and the general counsel or external counsel.

KPMG Taseer Hadi & Co.

The RMP has a seat on the Executive Committee and the Board. The fact that the role is Executive Committee and Board position, and seniority of the reporting lines, underlines the importance that the firm places on risk and quality issues. The RMP is supported by a team of partners and professionals in each of the functions.

The Audit, Tax and Advisory Functions -- Function Heads

The three heads of the client service function (Audit, Tax and Advisory) are accountable to the Senior Partner for the quality of service delivered in their respective functions. They are responsible for the execution of the risk management and quality assurance procedures for their specific functions within the framework set by the Risk Management Partner. These procedures make it clear that, at the engagement level, risk management and quality control is ultimately the responsibility of all professionals in the firm.

KPMGTH Head of Audit is responsible for the effective management and control of the Audit function. This includes:

- Setting a strong tone and culture supporting audit quality through communication, engagement support and commitment to the highest standards of professional excellence, including professional scepticism, objectivity, and ethics and integrity.
- Developing and implementing an audit strategy which is aligned with KPMGTH's audit quality requirements; and
- Working with the Risk Management Partner to monitor and address audit quality and risk matters as they relate to the Audit practice,

Audit Leadership Team

The Audit Leadership Team of KPMGTH met periodically during the year as and when needed and these meetings included discussions about current and emerging audit quality issues arising from external and internal quality review processes, queries being raised by engagement teams, root cause analysis procedures and other quality matters identified from a variety of sources.

For more complex issues (which might require amendments to KPMG's global audit methodology or audit tools) these will be raised with KPMG International's Global Audit groups for consideration and potential development of solutions by the KPMG Global Solutions Group (KGSG) and the International Standards Group (ISG). For more information about the KGSG and the ISG refer to [section 8.1.2 of the member firm transparency report](#).



KPMG Taseer Hadi & Co.

Audit Quality Committee

In addition, within the Audit function our Audit Quality Committee considered matters relating to maintaining and improving audit quality. During the year, the Audit Quality Committee comprised 06 people. The Audit Quality Committee meets on as and when required basis. The Audit Quality Committee considers the detailed findings (and related actions) from external regulatory reviews, the internal Quality Performance Review program and other quality control programs, as well as papers on a range of issues designed to allow us to challenge ourselves in various aspects of audit quality and improvement.

2.2 Clearly articulated strategy focused on quality, consistency, trust and growth

2.2.1 Our business

KPMG Taseer Hadi & Co. (KPMGTH) is a professional services firm that delivers Audit, Tax and Advisory services. We operate out of three offices across Pakistan and had an average of 2,225 personnel in the year to 30 June 2023 (2022: 1,787).

Our audit services in Pakistan are delivered through KPMGTH. Full details of the services offered by KPMGTH can be found on our website: [KPMG in Pakistan - KPMG Pakistan \(home.kpmg\)](https://www.kpmg.com/au/pakistan)

2.2.2 Our strategy

Our strategy is set by the KPMGTH Board and demonstrates a commitment to quality and trust. Our focus is to invest significantly in priorities that form part of a global strategy execution.

2.3 Defined accountabilities, roles and responsibilities, including for leadership

2.3.1 Legal structure

KPMGTH and all other KPMG firms are party to membership and associated documents, the key impact of which is that all KPMG member firms in the KPMG global organization are members in, or have other legal connections to, KPMG International Limited, an English private company limited by guarantee. KPMG International Limited acts as the coordinating entity for the overall benefit of the KPMG member firms. It

KPMG Taseer Hadi & Co.

does not provide professional services to clients. Professional services to clients are exclusively provided by member firms.

Further detail on the revised legal and governance arrangements for the KPMG global organization can be found in section 'Governance and leadership' of the 2022 [KPMG International Transparency Report link](#)

KPMG International Limited and the KPMG member firms are not a global partnership, single firm, multinational corporation, joint venture, or in a principal or agent relationship or partnership with each other. No member firm has any authority to obligate or bind KPMG International Limited, any of its related entities or any other member firm vis-à-vis third parties, nor does KPMG International Limited or any of its related entities have any such authority to obligate or bind any member firm. KPMGTH is part of the KPMG global organization of professional services firms providing Audit, Tax, and Advisory services to a wide variety of public and private sector organizations. The KPMG organization structure is designed to support consistency of service quality and adherence to agreed Values wherever its member firms operate.

KPMGTH is owned by local partners and is a partnership firm formed under Partnership Act, 1932 and regulated under the bylaws of The Institute of Chartered Accountants of Pakistan (ICAP). The firm is also registered with Audit Oversight Board of Pakistan.

2.3.2 Name, ownership and legal Relationships

KPMG is the registered trademark of KPMG International and is the name by which the member firms are commonly known. The rights of member firms to use the KPMG name and marks are contained within agreements with KPMG International.

Member firms are generally locally owned and managed. Each member firm is responsible for its own obligations and liabilities. KPMG International and other member firms are not responsible for a member firm's obligations or liabilities.

Member firms may consist of more than one separate legal entity. If this is the case, each separate legal entity will be responsible only for its own obligations and liabilities, unless it has expressly agreed otherwise.

2.3.3 Responsibilities and obligations of member firms

Pursuant to their membership agreements with KPMG International, member firms are required to comply with KPMG International's policies, procedures and regulations including quality standards governing how they operate and how they provide services to clients to compete effectively. This includes having a firm structure that ensures

KPMG Taseer Hadi & Co.

continuity and stability and being able to adopt global strategies, share resources (incoming and outgoing), service multi-national clients, manage risk, and deploy global methodologies and tools.

Each member firm takes responsibility for its management and the quality of its work.

Member firms commit to a common set of KPMG Values (see section [Fostering the right culture, starting with tone at the top](#)).

KPMG International's activities are funded by an annual payment paid to it by member firms. The basis for calculating such amounts is approved by the Global Board and consistently applied to the member firms. A firm's status as a KPMG member firm and its participation in the KPMG organization may be terminated if, among other things, it has not complied with the policies, procedures and regulations set by KPMG International or any of its other obligations owed to KPMG International.

2.4 Overseen using robust governance structures

2.4.1 Governance structure

KPMGTH applies high standards of corporate governance

The Partnership (all partners) elects a Senior Partner and a Board. The Board comprises of four elected members as well as the Senior Partner and RMP. The Board and Senior Partner are elected for three years term. The Board is responsible for overall management of the partnership including operating and financial performance, annual business plans and budget, marketing, technology development, recruitment and retention, compensation, nomination and quality, risk and compliance policies.

The Board meets on a regular basis around the year. The Senior Partner is also the Chairman of the Board. The Senior Partner is responsible for the day to day management of the Partnership and dealing with operational matters under the overall guidance and direction of the Board. The Senior Partner is responsible for ensuring that the Board members receive accurate, timely and clear information and ensuring effective communication and relationships with the partners and staff at large. The Senior Partner also acts as the international contact partner and represents KPMGTH on international forums and to external agencies.

The Senior Partner has appointed the Risk Management and Ethics and Independence Partner who leads a dedicated Risk Management Department.

KPMG Taseer Hadi & Co.

The Executive Committee

The Executive Committee is responsible for management of the day-to-day activities of the KPMGTH, recommending policy to the Board and developing the business plan within the overall strategy set by the Board, together with its subsequent implementation. It deals with operational matters affecting the firm (including monitoring operating and financial performance, budgets, new business proposals, marketing, technology development, recruitment, and retention and general remuneration, prioritization and allocation of resources and investment and managing the risk profile of KPMGTH.

The Executive Committee members are all KPMGTH partners except for Chief Operating Officer and are appointed by the Senior Partner. As at June 2023, in addition to the Senior Partner, the Executive Committee included Heads of Audit, Tax and Advisory Function, Risk Management Partner and Chief Operating Officer.

The Executive Committee aims to meet regularly. During the year ended 30 June 2023, it met formally multiple times either face-to face or via video link/conference call supplemented by frequent additional telephone calls and ad hoc meetings.

Audit Quality Committee

The Audit Quality Committee, chaired by the National Head of Audit, reports to and ensures risk and quality matters are a priority for leadership.

Specifically, its responsibilities include:

- All Global and local audit quality initiatives are implemented with rigor to achieve the upmost level of objectivity, independence, ethics, and integrity.
- Audits are executed consistently in line with KPMG methodology, other applicable standards, and local regulatory frameworks.
- Audit function is in compliance with ISQC1 and ready for compliance with ISQM1 by Global timelines.
- A system of internal controls is in place to minimize, monitor, report and remediate audit quality incidents.
- Key areas of focus for Public Trust and Audit Quality are identified.
- Key audit quality indicators are monitored.
- Provide assurance to the Board on the appropriateness and effectiveness of system of internal controls over quality management.

KPMG Taseer Hadi & Co.

3 Applying expertise and knowledge

We are committed to continuing to build on our technical expertise and knowledge recognizing its fundamental role in delivering quality audits.

3.1 Methodology aligned with professional standards, laws and regulations

3.1.1 Consistent audit and assurance methodology and tools

Bringing consistency through our methodology

Our audit and assurance methodology, tools and guidance enable a consistent approach to planning, performing and documenting audit procedure over key accounting processes:

- Globally consistent and fully compliant with the applicable standards, including International Standard on Auditing (ISA), Public Company Accounting Oversight Board (PCAOB) and the American Institute of CPAs (AICPA) and are supplemented to comply with local auditing standards and regulatory or statutory requirements by KPMG firms;
- Inclusive of KPMG methodology interpretations that drive consistency in areas where the applicable standards are not prescriptive in the approach to be followed;
- Centered on identifying risk, focusing on risks of material misstatements and the necessary audit response;
- Made available to all KPMG audit and assurance professionals and required to be used, where necessary;
- Applied even where local auditing standards may be less demanding than the ISAs; and
- Based on the requirements of the International Standard on Assurance Engagements (ISAE) and aligned to assurance products in response to the growth of ESG reporting.

The KPMG audit methodology is set out in KPMG's Audit Manual (for use with eAudit) and the KPMG Audit Execution Guide (for use with the KPMG Clara workflows) and includes KPMG interpretation of how to apply ISAs, which we believe enhance audit quality.

KPMG Taseer Hadi & Co.

The KPMG Assurance Manuals provide the requirements and guidance for a consistent approach to performing assurance engagements, in accordance with the International Standard on Assurance Engagements (ISAE) 3000, Assurance Engagements Other than Audits or Reviews of Historical Financial Information. The audit and assurance methodologies emphasize applying appropriate professional skepticism in the execution of procedures and require compliance with relevant ethical requirements, including independence.

Enhancements to the audit and assurance methodologies, guidance and tools are made regularly to maintain compliance with the applicable standards and address emerging auditing and assurance areas of focus and audit quality results (internal and external). For example, the current focus on ESG assurance is driving updates to our assurance methodologies, tools and guidance.

KPMG firms may add local requirements and/or guidance to the globally prescribed minimum requirements in the KPMG Audit Manual, the KPMG Audit Execution Guide and the KPMG Assurance Manuals to comply with additional professional, legal, or regulatory requirements.

3.2 Deep technical expertise and knowledge

3.2.1 Access to specialist network

Specialist expertise is an increasingly important part of the modern audit. KPMGTH engagement teams have access to a network of KPMG specialists – either within their firm or in other KPMG firms. These specialists receive the training they need to ensure they have the competencies, capabilities and objectivity to appropriately fulfill their role on our audit. They also receive a global annual update on global quality performance issues.

The need for specialists to be assigned to an audit engagement in areas such as information, technology, tax, treasury, actuarial, forensic and valuations is considered as part of the audit engagement acceptance and continuance process, as well as during the planning and conduct of the engagement.

3.2.2 Our commitment to audit quality during significant external events

Significant external events such as the conflict in Ukraine, the COVID-19 pandemic and the emerging impacts of climate change have contributed to rising inflation and interest rates, supply chain disruption and increased global economic uncertainty.

KPMG Taseer Hadi & Co.

Matters such as going concern, asset impairments and valuations will likely require careful judgment as organizations deal with elevated uncertainty and market volatility. KPMG firms' role as auditors is to evaluate these judgments.

We maintain an online financial reporting resource center to assist financial statement preparers and other stakeholders in understanding the potential accounting and disclosure implications of significant external events.

KPMG International issues extensive guidance to assist engagement teams in addressing the financial reporting, auditing and reporting related matters arising from the impacts of these external events, addressing the potential implications for going concern, asset impairments, valuations and related disclosures, materiality, risk assessment, group audits, subsequent events, audit evidence and communications with those charged with governance.

KPMG's guidance is continually updated as new significant accounting, auditing and reporting issues emerge.

KPMG is a technology-enabled organization, with technical accounting and auditing resources, guidance and audit platforms and tools available electronically which enable our engagement teams to effectively operate in office and remote working environments.

3.3 Quality and risk management manual

KPMG International has quality control policies that apply to all member firms. These are included in KPMG's Global Quality & Risk Management Manual (GQ&RM Manual) which applies to all KPMG firms and all KPMG personnel. KPMGTH is required to establish and maintain a system of quality management and design, implement, and test the operating effectiveness of quality controls.

KPMG Taseer Hadi & Co.

4 Embracing digital technology

At KPMG, we are committed to serving the public interest and creating value through continuous innovation. We are transforming the audit experience for our professionals and clients by leveraging the data and insights of leading technologies and enhancing audit quality by increasing our ability to focus on the issues that matter.

4.1 Intelligent, standards-driven audit workflow

All KPMGTH professionals are expected to adhere to KPMG International and KPMGTH policies and procedures including independence policies and are provided with a range of tools and guidance to support them in meeting these expectations. The KPMGTH policies and procedures set for audit engagements incorporate the relevant requirements of accounting, auditing, ethical and quality control standards, and other relevant laws and regulations.

4.1.1 Evolving our audit workflows

We recognize that to deliver quality audits, we need to continually evolve and develop our technology solutions to keep pace with today's digital world.

That is why we reimagined our audit platform, workflows and methodology to provide enhanced consistency and support to our audit engagement teams, deliver detailed insights, and future-proof our systems for the expected continued development of new technologies, such as robotic process automation, machine learning and cognitive technologies.

The release of the KPMG Clara workflows and revised audit methodology is an important milestone in KPMG's journey to innovate, digitalize and transform the audit experience. It is a significant investment that underlines our commitment to audit quality, consistency and innovation.

4.2 KPMG Clara

KPMG Clara is our smart and intuitive technology platform that is driving globally consistent audit execution. As a fully integrated, scalable, cloud-based platform, it enables the enhanced audit methodology through a data-enabled workflows.

The platform integrates new and emerging technologies, with advanced capabilities that leverage data science, audit automation, and data visualization.

KPMG Taseer Hadi & Co.

The digital audit is increasingly integral to how KPMG member firms perform quality audits and interact with their clients. Policies and guidance are in place to establish and maintain appropriate processes and controls regarding the development, evaluation and testing, deployment and support of technology in our audits.

KPMG Clara is helping auditors see meaningful patterns across a business, whether conducting risk assessment, tracing transactions through a complex revenue process, or simply adding up the accounts. Examples of current capabilities include:

- Analysis of account balances and journal entry data;
- Automate of 'period on period' balances comparison and 'time series' evolution information;
- Analysis of sub-ledger, transactional data over certain business processes and accounts; and
- Integration (where applicable) with industry-specific digital procedures and solutions.

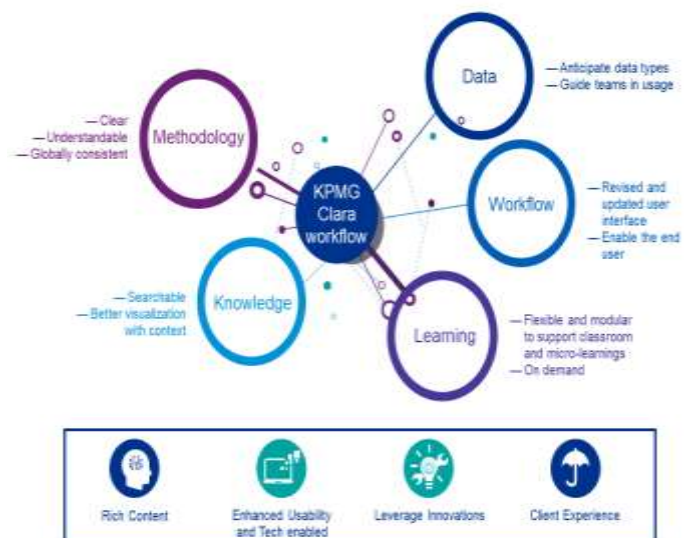
Our vision of the future

KPMG Clara was developed to be a foundational technology platform for KPMG to deliver audit quality. It delivers this by being the base technology providing new capabilities in a globally consistent way, enabling the audit workflows and providing a fully digital experience for our audit professionals.

The KPMG Clara platform evolves as technologies such as artificial intelligence, blockchain and cognitive capabilities transform how audits are delivered.

KPMG Clara workflows

Our previous platform, eAudIT, is being replaced with new workflows embedded with our revised audit methodology and which are enabled by the KPMG Clara workflows (with the exception of very small and less complex national audits) commenced globally in 2020 with planned completion of full global transition for the 2022 fiscal





KPMG Taseer Hadi & Co.

period-end audits. Global transition for less complex national audits, leveraging enhanced scaling capability has commenced in 2022 and will be completed by 2023.

The web-enabled KPMG Clara workflows guide audit teams through a series of steps in a logical sequence aligned to the applicable professional auditing standards with a clear display of information, visuals, and guidance available, and with embedded advanced digital audit and project management capabilities. The workflows and revised audit methodologies are scalable – adjusting the requirements to the size and complexity of the audit engagement. KPMG Clara workflows significantly enhance the execution of an audit by KPMG professionals and drive audit quality and global consistency.

Using data mining and tracking of relevant engagement level data indicators, the KPMG Clara workflows can also facilitate monitoring of audit execution at the engagement level.

We continue to enhance the KPMG Clara smart audit platform to accommodate evolving security demands, further integrate existing audit applications, and develop new capabilities to digitalize additional audit processes.

4.2.1 Client confidentiality, information security, and data privacy

The importance of maintaining client confidentiality is emphasized through a variety of mechanisms, including the KPMG Global and KPMGTH Code of Conduct.

We have policies on information security, confidentiality, personal information and data privacy. We have a document retention policy concerning the retention period for audit documentation and other records relevant to an engagement in accordance with applicable laws, regulations, and professional standards.

KPMG provides training on confidentiality, information protection and data privacy requirements to all KPMGTH personnel annually.

KPMG Taseer Hadi & Co.

5 Nurturing diverse skilled teams

Our people make the real difference and are instrumental in shaping the future of audit at KPMG. We put quality and integrity at the core of our audit practice. Our auditors have diverse skills and capabilities to address complex problems.

5.1 Recruiting appropriately qualified and skilled people, including specialists, with diversity of perspective and experience

One of the key drivers of quality is ensuring that all KPMG professionals have the appropriate skills and experience, motivation and purpose to deliver high-quality audits. This requires the right recruitment, development, reward, promotion, retention and assignment of professionals.

5.1.1 Recruitment

KPMGTH is committed to building an extraordinary people experience for all current and prospective KPMG partners and employees.

Our recruitment strategy is focused on drawing entry-level talent from a broad talent base.

KPMGTH also recruits significant numbers at an experienced hire.

All candidates submit an application and are employed following a variety of selection processes, which may include application screening, competency-based interviews, and qualification/reference checks.

These leverage fair and job-related criteria to ensure that candidates possess the appropriate skill and experience to perform competently, are suitable and best placed for their roles.

KPMGTH recruited over 966 new people in the year ended 30 June 2023 (2022: over 807 new people were hired).

5.1.2 Inclusion, diversity & equity programs

KPMGTH is committed to building a diverse and equitable firm that is inclusive to all.

Inclusion, diversity and equity (IDE) is core to our very existence – helping us build great teams with diverse views that represent the world we live in. It leads to better

KPMG Taseer Hadi & Co.

decision making, drives greater creativity and innovation, and encourages us to stand up, live our Values, and do what is right.

We recognize our firms' global position working with clients around the world affords us a privileged place. With that comes an opportunity and responsibility to achieve more and push for a fairer, more equitable society.

Our KPMG Global Inclusion, Diversity & Equity Collective Action Plan outlines the actions that are necessary to advance inclusion, diversity and equity at KPMGTH and across all KPMG firms.

For more about Inclusion & Diversity at KPMG read [here](#).

5.1.3 Reward and Promotion

Reward

KPMGTH has compensation and promotion policies that are informed by market data, clear, simple, fair and linked to the performance review process. This helps our partners and employees understand what is expected of them, and what they can expect to receive in return. The connection between performance and reward is achieved by assessing relative performance across a peer group to inform reward decisions.

Reward decisions are based on consideration of both individual and firm performance.

The extent to which our people feel their performance has been reflected in their reward is measured through the annual Global People Survey with action plans developed as required.

Promotion

The results of performance evaluations directly affect the promotion and remuneration of partners and employees and, in some cases, their continued association with KPMG.

5.2 Assigning an appropriately qualified team

KPMGTH has procedures in place to assign engagement partners and other professionals to a specific engagement on the basis of their skill sets, relevant professional and industry experience, and the nature of the assignment or engagement. Function heads are responsible for the partner assignment process. Key considerations include partner experience, and capacity – based on an annual partner

KPMG Taseer Hadi & Co.

portfolio review – to perform the engagement taking into account the size, complexity and risk profile of the engagement and the type of support to be provided (i.e., the engagement team composition and specialist involvement).

Audit engagement partners are required to be satisfied that their engagement teams have appropriate competencies, training and capabilities including time, to perform audit engagements in accordance with our audit methodology, professional standards and applicable legal and regulatory requirements. This may include involving specialists from our own firm, other KPMG member firms or external experts.

When considering the appropriate competence and capabilities expected of the engagement team as a whole, the engagement partner's considerations may include the following:

- Understanding of, and practical experience with, audit engagements of a similar nature and complexity through appropriate training and participation;
- Understanding of professional standards and legal and regulatory requirements;
- Appropriate technical skills, including those related to relevant information technology and specialized areas of accounting or auditing;
- Knowledge of relevant industries in which the client operates;
- Ability to apply professional judgment;
- Understanding of KPMGTH's quality control policies and procedures; and
- Quality Performance Review (QPR) results and results of regulatory inspections.

5.3 Investing in data centric skills – including data mining, analysis and visualization

KPMG is strategically investing in our talent pipeline by partnering with world-class institutions to sustain our strong leadership, while also looking forward to cultivating the skills and capabilities that will be needed in the future. We are recruiting and training professionals who specialize in software, cloud capabilities, and artificial intelligence and who can bring leading technology capabilities to our smart audit platform. We provide training on a wide range of technologies to ensure that field professionals not only meet the highest professional standards but are also upskilled in new technology. With this approach we are bringing together the right people with the right skills and the right technology to perform exceptional audits.

KPMG Taseer Hadi & Co.

5.4 Focused learning and development on technical expertise, professional acumen, and leadership skills

5.4.1 Commitment to technical excellence and quality service delivery

All KPMGTH professionals are provided with the technical training and support they need to perform their roles. This includes access to internal specialists and the professional practice department for consultation. Where the right resource is not available within KPMGTH, the firm accesses a network of highly skilled KPMG professionals in other KPMG firms

At the same time, audit policies require all KPMG audit professionals to have the appropriate knowledge and experience for their assigned engagements.

5.4.2 Lifetime learning strategy

Formal Training

Annual training priorities for development and delivery are identified by the Audit Learning and Development groups at global, regional and, where applicable, KPMG firm level.

Mandatory learning requirements for audit professionals across the KPMG organization are established annually. Training is delivered using a blend of learning approaches and performance support.

Mentoring and on the job training

Learning is not confined to a single approach — rich learning experiences are available when needed through coaching and just-in-time learning, and aligned with job specific role profiles and learning paths.

Mentoring and on-the-job experience play key roles in developing the personal qualities important for a successful career in auditing, including professional judgment, technical excellence, and instinct.

We support a coaching culture throughout KPMG as part of enabling KPMG professionals to achieve their full potential and instill that every team member is responsible for building the capacity of the team, coaching other team members and sharing experiences.

KPMG Taseer Hadi & Co.

5.4.3 Licensing and mandatory requirements for IFRS Standards and US GAAP engagements

Licensing

All KPMGTH professionals are required to comply with applicable professional license rules and satisfy the Continuing Professional Development requirements in the jurisdiction where they practice. KPMG International policies and procedures are designed to facilitate compliance with license requirements. We are responsible for ensuring that audit professionals working on engagements have appropriate audit, accounting and industry knowledge, and experience in the local predominant financial reporting framework which is accounting and reporting standards as applicable in Pakistan.

Mandatory requirements – IFRS Standards and US GAAP engagements

In addition, KPMG has specific requirements for partners, managers and Engagement Quality Control (EQC) reviewers working on IFRS Standard engagements in countries where IFRS Standards are not the predominant financial reporting framework.

Similar policies apply to engagements performed outside the US to report on financial statements or financial information prepared in accordance with US GAAP and/or audited in accordance with US auditing standards, including reporting on the effectiveness of the entity's internal control over financial reporting (ICOFR). These require that at a minimum, all partners, managers, and, if appointed, the EQC reviewers (and for engagements conducted in accordance with US GAAP and/or US auditing standards engagements, the engagement partner, engagement manager, engagement in-charge, and, if appointed the EQCR reviewers) assigned to the engagement have completed relevant training and that the engagement team, collectively, has sufficient experience to perform the engagement or has implemented appropriate safeguards to address any shortfalls.

5.5 Recognizing quality

5.5.1 Personal development

KPMGTH's approach to performance development 'Open Performance Development', is built around the 'Everyone a Leader' performance principles, and includes:

- Global role profiles (including role profiles specific to audit quality accountabilities and responsibilities);
- A goal library (including audit quality content); and



KPMG Taseer Hadi & Co.

- Standardized review forms (with provision for audit quality ratings).

Open Performance Development is linked to the KPMG Values and designed to articulate what is required for success – both individually and collectively. We know that by being clear and consistent about the behaviors we expect and rewarding those who demonstrate them, we will continue to drive a relentless focus on audit quality.

At the same time, KPMG is driving a shift in our performance-driven culture, supported by and enacted through leading technology that allows us to embed audit quality into the assessment of performance and the decisions around reward, as well as drive consistency across the global organization.

KPMGTH consider quality and compliance metrics in assessing the overall evaluation, promotion and remuneration of partners and directors and managers. These evaluations are conducted by performance managers and partners who are able to assess performance.

KPMG Taseer Hadi & Co.

6 Associating with the right clients and engagements

Rigorous global client and engagement acceptance and continuance policies are vital to being able to provide high-quality professional services.

6.1 Following the client and engagement acceptance and continuance policies

The KPMG client and engagement acceptance and continuance policies and processes are designed to identify and evaluate potential risks prior to accepting or continuing a client relationship or performing a specific engagement.

KPMG firms are required to evaluate whether to accept or continue a client relationship or perform a specific engagement. Where client/engagement acceptance (or continuance) decisions pose significant risks, additional approvals are required.

6.2 Accepting appropriate clients and engagements

6.2.1 Client evaluation

KPMGTH undertakes an evaluation of every prospective client.

This involves obtaining sufficient information about the prospective client, its key management, and significant beneficial owners and then properly analyzing the information to be able to make an informed acceptance decision. This evaluation includes an assessment of the client's risk profile and obtaining background information on the client, its key management, directors and owners. If necessary, we obtain additional information required to satisfy applicable legal and/or regulatory requirements.

6.2.2 Engagement evaluation

Each prospective engagement is also evaluated to identify potential risks in relation to the engagement. A range of factors are considered as part of this evaluation, including potential independence and conflict of interest issues (using Sentinel™, KPMG's conflicts and independence checking system), intended purpose and use of engagement deliverables, public perception, whether the services would be unethical or inconsistent with our Values, as well as factors specific to the type of engagement. For audit services, these include the competence of the client's financial management team and the skills and experience of KPMG professionals assigned to staff the

KPMG Taseer Hadi & Co.

engagement. The evaluation is made in consultation with other senior KPMGTH personnel and includes additional reviews, as required.

Where audit services are to be provided for the first time, the prospective engagement team is required to perform additional independence evaluation procedures including a review of any non-audit services provided to the client and of other relevant business, financial and personal relationships.

Similar independence evaluations are performed when an existing audit client becomes a public interest entity or additional independence restrictions apply following a change in the circumstances of the client.

Depending on the overall risk assessment of the prospective client and engagement, additional safeguards may be introduced to help mitigate the identified risks. Any potential independence or conflict of interest issues are required to be documented and resolved prior to acceptance.

A prospective client or engagement will be declined if a potential independence or conflict issue cannot be resolved satisfactorily in accordance with professional standards and our policies, or if there are other quality and risk issues that cannot be appropriately mitigated.

6.2.3 Continuance process

KPMGTH undertakes an annual re- evaluation of all its audit clients. The re- evaluation identifies any risks in relation to continuing association and any mitigating procedures that need to be put in place (this may include the assignment of additional professionals such as an Engagement Quality Control (EQC) reviewer or the need to involve additional specialists on the audit).

Recurring or long running non-audit engagements are also subject to periodic re-evaluation. In addition, clients and engagements are required to be re-evaluated if there is an indication that there may be a change to the risk profile, and as part of the continuous independence evaluation process, engagement teams are required to identify if there have been any changes to previously identified threats or if there are new threats to independence. The threats are then evaluated and, if not at an acceptable level, are eliminated or appropriate safeguards are applied to reduce the threats to an acceptable level.

6.2.4 Withdrawal process

Where KPMGTH comes to a preliminary conclusion that indicates that we should withdraw from an engagement or client relationship, we consult internally and identify



KPMG Taseer Hadi & Co.

any required legal, professional, and regulatory responsibilities. We also communicate as necessary with those charged with governance and any other appropriate authority.

6.2.5 Managed portfolio of clients

KPMGTH heads of functions appoint engagement partners who have the appropriate competence, capabilities, time and authority to perform their role for each engagement.

They review each audit partner's client portfolio in individual discussions with the audit partner. The reviews consider the industry, nature and risk of the client portfolio as a whole along with the competence, capabilities and capacity of the partner and wider team to deliver a quality audit for every client.

KPMG Taseer Hadi & Co.

7 Being independent and ethical

Auditor independence is a cornerstone of international professional standards and regulatory requirements.

7.1 Acting with integrity and living our values

KPMG International's detailed independence policies and procedures, incorporate the IESBA Code of Ethics. These are set out in the KPMG GQRMM, which applies to all KPMG firms. Automated tools, which are required to be used for every prospective engagement to identify potential independence and conflict of interest issues, facilitate compliance with these requirements.

These policies are supplemented by other policies and processes to ensure compliance with the standards issued by The Institute of Chartered Accountants of Pakistan (ICAP), Securities and Exchange Commission of Pakistan (SECP) and other regulatory authorities. These policies and processes cover areas such as firm independence (covering, for example, treasury and procurement functions), personal independence, firm financial relationships, employment relationships, partner rotation and approval of audit and non-audit services.

The Head of the Global Independence Group is supported by a core team of specialists to help ensure that robust and consistent independence policies and procedures are in place at KPMG firms, and that tools are available to help the firms and their personnel comply with these requirements.

KPMGTH's RMP is also the Ethics and Independence Partner (EIP) of the firm who has primary responsibility for the direction and execution of ethics and independence policies and procedures in KPMGTH.

The EIP is responsible for communicating and implementing KPMG International policies and procedures and ensuring that local independence policies and procedures are established and effectively implemented when they are more stringent than the KPMG International requirements. The EIP fulfils this responsibility through:

- Implementing/monitoring the ethics and independence quality control process and structure within the firm;
- Approving/appointing partners responsible for ethics and independence within the firm;
- Overseeing the processes related to the evaluation of specific independence threats in connection with clients and prospective clients;

KPMG Taseer Hadi & Co.

- Participating in the development and delivery of training materials,
- Implementing procedures to address non-compliance; and
- Overseeing the disciplinary process for ethics and independence matters.

Amendments to KPMG International’s ethics and independence policies are included in regular quality and risk communications with all KPMG firms. KPMG firms are required to implement changes as specified in the communications, and this is checked through the internal monitoring programs described in [section 11.1.2](#).

KPMGTH partners and employees are required to consult with the EIP on certain matters as defined in the GQRMM. The EIP may also be required to consult with the Global Independence Group, depending upon the facts and circumstances.

7.2 Maintaining an objective, independent and ethical mindset, in line with the Code

7.2.1 Personal financial independence

KPMG International policies require that KPMG firms and KPMG professionals are free from prohibited financial interests in, and prohibited financial relationships with, KPMG firm audit and assurance clients (by definition, ‘audit client’ includes its related entities or affiliates), their management, directors, and, where required, significant owners. All KPMG partners - irrespective of their firm or function — are generally prohibited from owning securities of any audit client of any KPMG firm.

KPMG firms use a web-based independence compliance system (KICS) to assist KPMG professionals in complying with personal independence investment policies. This system contains an inventory of publicly available investments and provides a tracking mechanism for required users to report acquisitions and disposals of their financial interests. The system facilitates monitoring by identifying and reporting impermissible investments and other non-compliant activity (i.e. late reporting of an investment acquisition).

All Partners and manager grade or above client-facing employees are required to use the KICS system prior to entering into an investment to identify whether they are permitted to do so. They are also required to maintain a record of all of their investments in publicly available funds and securities registered on recognized or regulated exchanges in KICS, which automatically notifies them if any investment subsequently becomes restricted. Newly restricted investments are required to be disposed of within five business days of the notification. KPMG monitors partner and manager compliance with this requirement as part of our program of independence

KPMG Taseer Hadi & Co.

compliance audits of a sample of professionals. The Global Independence Group provides guidance and required procedures relating to the audit and inspection by KPMG firms of personal compliance with the KPMG independence policies. This includes sample criteria including the minimum number of professionals to be audited annually.

In 2023, 76 of our people were subject to these audits.

7.2.2 Employment relationships

Any KPMGTH professional providing services to an audit or assurance client irrespective of function is required to notify the firm EIP if they intend to enter into employment negotiations with that client. For partners, this requirement extends to any audit client of any KPMG firm that is a public interest entity.

Former members of the audit or assurance team or former partners of KPMGTH are prohibited from joining an audit or assurance client in certain roles unless they have disengaged from all significant connections to KPMGTH, including payments which are not fixed and predetermined and/or would be material to KPMGTH and ceased participating in KPMGTH business and professional activities.

Key audit partners and members of the chain of command for an audit client that is a public interest entity are subject to time restrictions (referred to as 'cooling-off' periods) that preclude them from joining that client in certain roles until a defined period has passed.

We communicate and monitor requirements in relation to employment and partnership of KPMGTH professionals by audit and assurance clients.

7.2.3 Firm financial Independence

KPMG firms are required to also be free from prohibited interests in, and prohibited relationships with, audit clients, their management, directors and where required, significant owners.

In common with other KPMG firms, KPMGTH uses KICS to record its own direct and material indirect investments in listed entities and funds (or similar investment vehicles) as well as in non-listed entities or funds. This includes investments held in associated pension, and employee benefit plans.

Additionally, KPMGTH is required to record in KICS all borrowing and capital financing relationships, as well as custodial, trust and brokerage accounts that hold member firm assets.

KPMG Taseer Hadi & Co.

On an annual basis, KPMGTH confirms compliance with independence requirements as part of the KPMG Quality & Compliance Evaluation program.

7.2.4 Business relationships/suppliers

KPMGTH has policies and procedures in place that are designed to ensure its business relationships with audit and assurance clients are maintained in accordance with the IESBA Code of Ethics and other applicable independence requirements, such as those promulgated by the SEC.

7.2.5 Independence clearance process

In addition to the standard acceptance evaluation performed for every engagement, which includes an evaluation of independence, KPMGTH follows specific procedures to identify and evaluate threats to independence related to prospective audit clients that are public interest entities; these procedures, also referred to as 'the independence clearance process,' are required to be completed prior to accepting an audit engagement for these entities.

The 'KPMG Independence Checkpoint' tool is used to automate and standardize the procedures that comprise the independence clearance process.

7.2.6 Independence training and confirmations

All KPMGTH partners and client service professionals, as well as certain other individuals are required to complete independence training that is appropriate to their grade and function upon joining KPMGTH and on an annual basis thereafter.

New partners and client facing employees who are required to complete this training are required to do so by the earlier of

- a) thirty days after joining KPMGTH or,
- b) before providing any services to or becoming a member of the chain of command for, any audit client.

We also provide all partners and employees with annual training on:

- the Global Code of Conduct and;
- bribery and compliance with laws, regulations, and professional standards.

KPMG Taseer Hadi & Co.

New partners and employees are required to complete this training within three months of joining KPMGTH.

All KPMG partners and employees are required to sign, upon joining KPMGTH/ accepting their offer to join KPMGTH, and thereafter, an annual confirmation stating that they have remained in compliance with applicable ethics and independence policies.

7.2.7 Non-audit services

All KPMG firms are required, at a minimum, to comply with the IESBA Code of Ethics and applicable laws and regulations related to the scope of services that can be provided to audit clients.

In addition to identifying potential conflicts of interest, Sentinel™ facilitates compliance with independence requirements. Certain information on all prospective engagements, including detailed service descriptions, deliverables and estimated fees are required to be entered into Sentinel™ as part of the engagement acceptance process. When the engagement is for an audit client, an evaluation of potential independence threats and safeguards is also required to be included in the Sentinel™ submission.

Lead audit engagement partners (LAEPs) are required to maintain group structures for their public interest entity and certain other audit clients including their related entities or affiliates in Sentinel™. They are also responsible for identifying and evaluating any independence threats that may arise from the provision of a proposed non-audit service and the safeguards available to address those threats. For entities for which group structures are maintained, Sentinel enables LAEPs to review and request revision to, approve, or deny any proposed service for those entities worldwide. For approved proposed services, Sentinel designates a timeframe during which the approval remains valid. Upon expiration of the established timeframe, the services are required to be complete or be re-evaluated for permissibility; otherwise, the services are required to be exited.

KPMGTH is required to establish and maintain a process to review and approve all new and significantly modified services that are developed by KPMGI. KPMGTH's EIP is involved in the review of potential independence issues related to these new or modified services.

KPMG global independence policies prohibit KPMG firm audit partners from being evaluated on, or compensated based on, their success in selling non-audit services to their audit clients.

KPMG Taseer Hadi & Co.

7.2.8 Fee dependency

KPMG International's policies recognize that self-interest or intimidation threats may arise when the total fees from an audit client represent a large proportion of the total fees of the KPMG firm expressing the audit opinion.

These policies require firms to consult with their Regional Risk Management Partner where it is expected that total fees from an audit client will exceed 10 percent of the annual fee income of the member firm for two consecutive years. In addition, if the total fees from a public interest entity audit client and its related entities were to represent more than 10 percent of the total fees received by a particular member firm for two consecutive years: these policies further require that:

- This be disclosed to those charged with governance at the audit client; and
- A partner from another KPMG member firm be appointed as the engagement quality control (EQC) reviewer.

No audit client accounted for more than 10% of the total fees received by KPMGTH over the last two years.

7.2.9 Resolving conflicts of interest

Conflicts of interest can arise in situations where KPMGTH partners or employees have a personal connection with the client that may interfere, or be perceived to interfere, with their ability to remain objective, or where they are personally in possession of confidential information relating to another party to a transaction. Consultation with the RMP or the EIP is required in these situations.

All KPMG firms and personnel are responsible for identifying and managing conflicts of interest, which are circumstances or situations that have, or may be perceived to have, an impact on a firm's and/ or its partners' or employees' in their ability to be objective or otherwise act without bias.

All KPMG firms are required to use Sentinel™ for potential conflict identification so that these can be addressed in accordance with legal and professional requirements.

KPMGTH has risk management resources who are responsible for reviewing any identified potential conflict and working with the affected member firms to resolve the conflict, the outcome of which is required to be documented.

Escalation and dispute resolution procedures are in place for situations in which agreement cannot be reached on how to manage a conflict. If a potential conflict issue cannot be appropriately mitigated, the engagement is declined or terminated.

KPMG Taseer Hadi & Co.

KPMG International policies are also in place to prohibit KPMG personnel from offering or accepting inducements, including gifts and hospitality to or from audit clients, unless the value is trivial and inconsequential, is not prohibited by relevant law or regulation and is not deemed to have been offered with the intent to improperly influence the behaviour of the recipient or which would cast doubt on the individual's or the member firm's integrity, independence, objectivity or judgment.

7.2.10 Independence breaches

All KPMGTH personnel are required to report an independence breach as soon as they become aware of it to the EIP. In the event of failure to comply with our independence policies, whether identified in the compliance review, self-declared or otherwise, professionals are subject to an independence disciplinary policy. All breaches of independence requirements of the IESBA Code of Ethics or other external independence requirements are required to be reported to those charged with governance as soon as possible, except where alternative timing for less significant breaches has been agreed with those charged with governance

KPMGTH has a documented and communicated disciplinary policy in relation to breaches of independence policies, incorporating incremental sanctions reflecting the seriousness of any violations. KPMGTH's Disciplinary Committee oversees policies and procedures in relation to ethical matters and breaches of requirements.

Matters arising are factored into our promotion and compensation decisions and, in the case of engagement leaders and managers, are reflected in their individual quality and risk metrics.

7.2.11 Partner and firm rotation

Partner rotation

KPMG International partner rotation policies are consistent with the requirements of the IESBA Code of Ethics and require all member firms to comply with any stricter local applicable rotation requirements.

KPMGTH partners are subject to periodic rotation of their responsibilities for audit clients under applicable laws, regulations, independence rules and KPMG International policy. These requirements place limits on the number of consecutive years that partners in certain roles may provide audit services to a client, followed by a 'time-out' period during which time these partners may not

- Participate in the audit;

KPMG Taseer Hadi & Co.

- Provide quality control for the audit;
- Consult with the engagement team or the client regarding technical or industry-specific issues;
- In any way influence the outcome of the audit;
- Lead or coordinate professional services at the client;
- Oversee the relationship of the firm with the audit client; or
- Have any other significant or frequent interaction with senior management or those charged with governance at the client.

KPMGTH monitors the rotation of audit engagement leaders (such as the engagement partner, the engagement quality control reviewer and any other key audit partner role, where there is a rotation requirement) and develops transition plans to enable allocation of partners with the necessary competence and capability to deliver a consistent quality of service to clients.

Firm rotation

As per the local regulatory requirement KPMGTH can act as statutory auditor of a client operating in financial sector for maximum period of 5 years and for pension funds it is 3 years.

7.3 Zero tolerance of bribery and corruption

Compliance with laws, regulations and standards is a key aspect for everyone at KPMGTH. We have zero tolerance of bribery and corruption.

We prohibit involvement in any type of bribery – even if such conduct is legal or permitted under applicable law or local practice. We also do not tolerate bribery by third parties, including by our clients, suppliers or public officials. KPMG International requires KPMG firms to have appropriate internal controls in place to mitigate the risk of involvement in bribery by the firm and its partners and employees.

All KPMG firm partners and employees are required to take training covering compliance with laws, regulations and professional standards relating to anti-bribery and corruption, including the reporting of suspected or actual non-compliance.

Further information on KPMG International anti-bribery and corruption policies can be found on [the anti-bribery and corruption site](#).

KPMG Taseer Hadi & Co.

8 Performing quality engagements

How an audit is conducted is as important as the result. KPMGTH partners and employees are expected to demonstrate behaviors consistent with our Values and follow all policies and procedures in the performance of effective and efficient audits.

8.1 Consulting when appropriate

8.1.1 Encouraging a culture of consultation

KPMG encourages a culture of consultation that supports engagement teams at KPMG firms throughout their decision-making processes and is a fundamental contributor to audit quality. KPMGTH promotes a culture in which consultation is recognized as a strength and that encourages all KPMG professionals to consult on difficult or contentious matters.

To help with this, firms are required to have established protocols for consultation and documentation of significant matters, including procedures to facilitate resolution of differences of opinion on engagement issues. KPMG audit, assurance and reporting manuals also include required consultations. GQRMM includes mandatory consultation requirements on certain matters.

8.1.2 Technical consultation and global resources

Technical accounting, auditing and assurance support is available to member firms through the Global Audit Methodology Group (GAMG), KPMG Global Solutions Group (KGSG), the International Standards Group (ISG) and the PCAOB Standards Group (PSG), all of which report directly to the Global Head of Audit.

Global Audit Methodology Group (GAMG)

KPMG's audit and assurance methodology is developed and maintained by the Global Audit Methodology Group (GAMG). The GAMG develops our audit and assurance methodology based on the requirements of the applicable audit and assurance standards of the IAASB, PCAOB and AICPA.

KPMG Global Solutions Group (KGSG)

The KGSG is responsible for the envisioning, development and deployment of global audit solutions, including new technology and automation innovations.

KPMG Taseer Hadi & Co.

The KGSG and GAMG work collaboratively to support member firms through collaboration, innovation and technology. We have made significant investment in our audit and assurance methodology and tools with the core focus of improving audit quality, global consistency and standardization.

With locations, in each of the three KPMG regions (Americas, EMA and ASPAC), the KGSG and GAMG teams comprise professionals with backgrounds in audit, assurance, IT, data science, mathematics, statistics, and more from around the world, who bring diverse experiences and innovative ways of thinking to further evolve KPMG's audit capabilities.

International Standards Group (ISG)

The KPMG ISG works with Global IFRS Standards topic teams, with geographic representation from around the world, and the IFRS Standards Panel and Methodology Advisory Group (MAG) to promote consistency of interpretation of IFRS Standards and auditing requirements between member firms, identify emerging issues, and develop global guidance on a timely basis. The ISG recently has expanded its remit to encompass the activities of the International Sustainability Standards Board (ISSB), including providing global thought leadership and guidance as the ISSB issues standards.

PCAOB Standards Group (PSG)

The KPMG PCAOB Standards Group (PSG) comprises a dedicated group of professionals with backgrounds in PCAOB auditing standards who promote consistency in the interpretation of PCAOB auditing standards in KPMG firms' audits of non-US components of US companies and of foreign private issuers and non-US components of SEC issuers, as defined by SEC regulations. The PSG also provides input into the development of training for auditors who work on PCAOB audit engagements and, where practicable, facilitates delivery of such training.

Member firm professional practice resources

Member firms provide consultation support on auditing and technical accounting matters to their audit professionals through professional practice resources (referred to as Department of Professional Practice or DPP). This resource also assists engagement teams where there are differences of opinion either within teams or with the EQC reviewer. Unresolved differences are required to follow a prescribed escalation protocol for final resolution. KPMG's ISG and PSG are also available for consultation support when required.

KPMG Taseer Hadi & Co.

8.2 Critically assessing audit evidence using professional judgement and skepticism

On all KPMG audits, the nature and extent of the audit evidence we gather is responsive to the assessed risks. We consider all audit evidence obtained during the course of the audit including contradictory or inconsistent audit evidence. Each team member is required to exercise professional judgement and maintain professional skepticism throughout the audit engagements. Professional skepticism involves a questioning mind and alertness to contradictory or inconsistencies in the audit evidence. Professional judgement encompasses the need to be aware of and alert to biases that may pose threats to good judgements.

8.3 Direct, coach, supervise and review

8.3.1 Embedding ongoing coaching, supervision and review

To invest in the building of skills and capabilities of KPMG professionals, KPMGTH promotes a continuous learning environment and supports a coaching culture.

Ongoing direction, coaching and supervision during an audit involves:

- Engagement partner participation in planning discussions;
- Tracking the progress of the audit engagement;
- Considering the competence and capabilities of the engagement team, including whether they have sufficient time to carry out their work, whether they understand their instructions;
- Whether the team understands its instructions and the work is being carried out in accordance with the planned approach to the engagement;
- Helping engagement team members address any significant matters that arise during the audit and modifying the planned approach appropriately;
- Identifying matters to review and discuss with more experienced team members during the engagement.

The timely review of the work performed so that significant matters are promptly identified, discussed and addressed is also used as a coaching opportunity.

KPMG Taseer Hadi & Co.

8.3.2 Engagement quality control (EQC) reviewers

The EQC review is an important part of KPMG's approach to quality. An EQC reviewer is required to be appointed for audit engagements, including any related review(s) of interim financial information, of all listed entities, non-listed entities with a high public profile, engagements that require an EQC review under applicable laws or regulations, and other engagements, including other assurance engagements, as designated by the Risk Management Partner or country Head of Audit.

An EQC review is an objective evaluation of significant judgements made by the engagement team and its related conclusions, performed by EQC reviewer, and completed on or before the date of the report. The EQC reviewer's evaluation of significant judgements includes an evaluation of the engagement team's assessment of significant risks, including fraud risks, the related responses and whether the related conclusions are appropriate. The EQC review is completed only after the EQC reviewer is satisfied that all significant matters they raised have been resolved, though the engagement partner is ultimately responsible for the resolution of accounting and auditing matters.

EQC reviewers are required to meet training, knowledge and experience criteria to perform the EQC review for a particular engagement. Reviewers are must be objective, cannot members of the engagement team and must be independent of the audit client.

8.4 Appropriately support and document conclusions

8.4.1 Reporting

Auditing standards as applicable in Pakistan, Companies Act 2017 and other Special Companies Regulations, largely dictate the format and content of the auditors' report which includes an opinion on the fair presentation of the reporting entity's financial statements in all material respects. Engagement leaders form all audit opinions based on the audit performed and evidence obtained.

In preparing auditors' reports, engagement partners have access to extensive reporting guidance and technical support through consultations with our DPP, especially where there are significant matters to be reported to users of the auditors' report, (e.g. a modification to the opinion or through the inclusion of an 'emphasis of matter' or 'other matter' paragraph).



KPMG Taseer Hadi & Co.

8.4.2 Engagement documentation

KPMGTH audit documentation is completed and assembled according to the timeline determined by the KPMG firm in accordance with KPMG International policy and applicable auditing standards. We have implemented administrative, technical and physical safeguards to protect the confidentiality and integrity of client and firm information. KPMG International adopted policies to apply to all KPMG firms to reduce the time period allowed to assemble audit documentation, which is significantly less than the time period required by the applicable auditing standards.



KPMG Taseer Hadi & Co.

9 Assessing risks to quality

KPMG International reviews the results of the quality monitoring programs and develops additional global remediation actions as needed.

Global remediation actions developed by KPMG International are aimed at changing behavior and driving quality and consistency across the global organization. Remediation actions may be implemented through the development of global policies, procedures, training, tools and guidance.

KPMG Taseer Hadi & Co.

10 Communicating effectively

We recognize that another important contributor to upholding audit quality is to obtain and promptly act upon feedback from key stakeholders.

10.1 Provide insights, and maintain open and honest two-way communication

At KPMGTH we stress the importance of keeping those charged with governance informed of issues arising throughout the audit through guidance and supporting resources. We achieve this through a combination of reports and presentations, attendance at Audit Committee or board meetings, and, when appropriate, ongoing discussions with management and members of the Audit Committee.

The role of audit committees is key in supporting quality auditing by overseeing the relationship between company and auditor and challenging what auditors do and how they do it.

Audit Committee Institute

In recognition of the demanding and important role that Audit Committees play for the capital markets and also of the challenges that they face in meeting their responsibilities, the [Audit Committee Institute](#) (ACI) aims to help audit committee members enhance their commitment and ability to implement effective audit committee processes.

The ACI operates in more than 39 countries across the globe and provides audit committee members with guidance on matters of interest to Audit Committees (such as cyber security and corporate culture); and the opportunity to network with their peers during an extensive program of technical updates and awareness seminars.

The ACI's offerings cover the array of challenges facing audit committees and businesses today — from risk management and emerging technologies to strategy and global compliance.

Further details and insights on ACI are [available here](#).

IFRS Standards Institute

KPMG's Global IFRS Institute provides information and resources to help the KPMGTH Board and Audit Committee members, executives, management, stakeholders and government representatives gain insight and access thought leadership about the evolving global financial and sustainability reporting frameworks.

KPMG Taseer Hadi & Co.

10.2 Conduct and follow-up on Global People Survey (GPS)

Only with engaged, talented people can KPMG deliver audits in line with our audit quality expectations. Annually KPMGTH personnel are invited to participate in KPMG's Global People Survey (GPS) to share their perception about their experience of working at KPMG. The GPS provides a measure of our people's engagement and insights into areas driving engagement. Results can be analyzed by several factors, for example functional or geographic area, grade and gender to provide additional focus for action.

Through the GPS, KPMGTH gains additional insight on how we are faring on categories known to impact employee engagement. We also cover areas of focus that are directly relevant to audit quality; the survey includes specific audit quality related questions that all individuals who participated in an audit in the previous 12 months are asked to respond to, giving us a particular data set for audit quality related matters.

The survey also provides KPMGTH leadership and KPMG international leadership with insights related to quality and risk behaviors, audit quality, upholding the KPMG Values, employee and partner attitudes to quality, leadership and tone at the top.

KPMGTH participates in the GPS, monitors result and takes appropriate actions to communicate and respond to the findings of the survey. The results of the GPS are also aggregated for the entire global organization and are presented to the Global Board each year and appropriate follow-up actions agreed.

Audit-specific analysis of GPS results is also undertaken, with a particular focus on audit quality. Results and key themes are presented to the Global Audit Steering Group on an annual basis for consideration of appropriate remedial action, if needed.

KPMG Taseer Hadi & Co.

11 Monitoring and remediation

Integrated quality monitoring and compliance programs enable KPMG firms to identify quality deficiencies, to perform root cause analysis and develop, implement, and report remedial action plans, both in respect of individual audit engagements and the overall system of quality management.

11.1 Rigorously monitor and measure quality

11.1.1 Commitment to continuous improvement

We commit to continually improve the quality, consistency and efficiency of KPMG firm audits. The quality monitoring and compliance programs are globally consistent in their approach across all member firms, including the nature and extent of testing and reporting. KPMGTH compares the results of internal monitoring programs with the results of those of any external inspection programs and takes appropriate action.

11.1.2 Internal monitoring and compliance programs

KPMGTH monitoring programs are created by KPMG International and applied across KPMG firms. The programs evaluate both:

- Engagement performance in compliance with the applicable professional standards, applicable laws and regulations and KPMG International key policies and procedures; and
- KPMGTH compliance with KPMG International key policies and procedures and the relevance, adequacy and effective operation of key quality control policies and procedures.

Our internal monitoring programs also contribute to the assessment of whether our system of quality management has been appropriately designed, effectively implemented, and operates effectively. These include:

Quality Performance Reviews (QPR), the KPMG Quality & Compliance Evaluation program (KQCE) and the Global Quality & Compliance Review (GQ&CR) program.

The results and lessons from the integrated monitoring programs are communicated internally and appropriate action is taken at local, regional and global levels.



KPMG Taseer Hadi & Co.

Audit Quality Performance Reviews (QPRs) program

The Audit QPR program assesses engagement level performance and identifies opportunities to improve engagement quality.

Risk-based approach

Each engagement leader is reviewed at least once in a four-year cycle. A risk-based approach is used to select engagements.

KPMGTH conducts the annual QPR program in accordance with KPMG International QPR instructions. The reviews are performed at KPMGTH level and are monitored regionally and globally.

Reviewer selection, preparation and process

There are robust criteria for selection of reviewers. Review teams include senior experienced lead reviewers that are independent of the engagement under review.

Training is provided to review teams and others overseeing the process, with a focus on topics of concern identified by audit oversight regulators and the need to be as rigorous as external reviewers.

Evaluations from Audit QPR

Consistent criteria are used to determine engagement ratings and member firm Audit practice evaluations.

Audit engagements selected for review are rated as 'Compliant', 'Compliant - Improvement Needed' or 'Not Compliant'.

Reporting

Findings from the QPR program are disseminated to firm professionals through written communications, internal training tools, and periodic partner, manager and staff meetings.

These areas are also emphasized in subsequent inspection programs to gauge the extent of continuous improvement.

Lead audit engagement partners (LAEPs) are notified of not compliant ratings on their respective cross-border engagements. Additionally, LAEPs of parent companies/head offices are notified where a subsidiary/affiliate of their client group is audited by a member firm where significant quality issues have been identified during the QPR program.

KPMG Taseer Hadi & Co.

Global Audit Quality Monitoring Group (GAQMG)

The GAQMG identifies issues to help drive audit quality. The group comprises a team of partners, directors and senior managers experienced in performing program reviews of listed and related entity (LRE) audit engagements. The team also includes partners and professionals with experience in auditing general information technology controls and application controls.

KPMG Quality & Compliance Evaluation (KQCE) program (formerly known as Risk Compliance Program (RCP))

KPMG International develops and maintains quality management policies and processes that apply to all KPMG firms. These policies and processes, and their related procedures, include the requirements of the GQ&RM Manual, ISQC- 1, and the implementation requirements of ISQM 1 for this transition period.

The objectives of the KQCE program are to:

- Document, assess and evidence KPMGTH's implementation of ISQM 1, extent of compliance of their system of quality management with Global Quality & Risk Management (GQ&RM) policies and key legal and regulatory requirements and
- Provide the basis for KPMGTH to evaluate that the firm and its personnel comply with relevant professional standards and applicable legal and regulatory requirements.

Where exceptions are identified, we are required to develop appropriate actions plans and then monitor the status of each action item.

Global Quality & Compliance Review (GQ&CR) program

Each KPMG firm is subject to a GQ&CR conducted by the KPMG International's GQ&CR team, independent of the firm, at various intervals based on identified risk criteria

The GQ&CR team performing the reviews is independent of the firm and is objective and knowledgeable of GQ&RM policies. GQ&CRs assess compliance with selected KPMG International policies and procedures and share best practices among member firms. The GQ&CR provides an independent assessment of:

- A firm's commitment to quality and risk management (tone at the top) and the extent to which its overall structure, governance and financing support and reinforce this commitment;
- A firm's compliance with KPMGI policies and procedures; and

KPMG Taseer Hadi & Co.

- The robustness with which the member firm performs its own quality and compliance program (former RCP and, current, KQCE program).

KPMGTH develop action plans to respond to all GQ&CR findings that indicate improvement is required and agree these with the GQ&CR team. Our progress on action plans is monitored by the GQ&CR central team. Results are reported to the GQ&RM Steering Group and where necessary, to appropriate KPMG International and regional leadership.

11.2 Obtain, evaluate and act on stakeholder feedback

11.2.1 Regulators

KPMGTH, being a firm registered with The Institute of Chartered Accountants of Pakistan is also subject to a Quality Control Review (QCR) program of ICAP.

KPMGTH is also registered as third country Auditor with the Financial Reporting Council, UK and is also registered with Audit Oversight Board.

KPMG International has regular two-way communication with the International Forum of Independent Audit Regulators (IFIAR), principally through IFIAR’s Global Audit Quality Working Group (GAQ WG), to discuss thematic audit quality issues along with targeted strategies for improvement. We value the open, honest and transparent dialogue that IFIAR facilitates on global audit quality issues.

Every KPMG firm is expected to maintain professional and respectful relationships with regulators, including proactively engaging, responding to questions in a timely manner and taking appropriate remedial actions.

External monitoring

Quality Assurance Board (QAB)

Every firm registered with ICAP and conducting audits of financial statements of Public Interest Companies (PICs), Large Sized Companies and Public Interest and Large Sized Companies which are either association not for profit or limited by guarantees is required to undergo a QCR organized by the Quality Assurance Board as follows:

Firms that have issued audit reports on PICs within last two calendar years	Once every two years
Firms other than above	Once every three years

KPMG Taseer Hadi & Co.

The Quality Assurance Board shall comprise of nine members nominated as follows: i) Three members shall be nominated by the Securities and Exchange Commission of Pakistan (SECP); ii) Two members shall be nominated by the State Bank of Pakistan (SBP); iii) One member shall be nominated by the Pakistan Stock Exchange; iv) Three members shall be nominated by the Council; and v) The Chairman of QAB shall be a member of the Institute having at least ten years post qualification experience and shall be elected by the members of QAB. Provided that a member in practice and/or a member with an economic interest in an audit firm shall not be eligible to become the Chairman of QAB. The above nominations shall be subject to following conditions: i) No more than two members shall be audit partners or employees in an audit firm and such members, if any, shall only be nominated by the Institute; ii) No member from the Council shall be a member of QAB; and iii) No current employee, member, or official of the Audit Oversight Board or any other statutory regulatory body or a securities exchange shall be a member of QAB.

QCR is carried out by following a set of procedures, which provide assurance on the standard of audit work performed by members in practice. Working paper files of specific audit engagements are selected from a list of audit clients of the firm and are reviewed to determine the audit report issued by the firm in respect of reviewed client(s), was supported or not supported by appropriate audit evidence. The selection of audit engagements shall be made from in such a manner that minimum following partners are covered:

Firms subject to the review	Audit Partners minimum Coverage (%)	Coverage of all audit partners (Years)
Firms that have issued audit reports of PICs within last two calendar years	50%	4 Years
Firms other than above	50%	6 Years

Quality Assurance Board conducted its last review in 2022.

External review has not identified any issue that have a material impact on the conduct of our statutory audit business.

Audit Oversight Board

An independent Audit Oversight Board (AOB) is formed under the Securities and Exchange Commission of Pakistan (SECP) Act, 1997 in line with international standards. Its functions, among many others, includes registration and de- registration of audit firms, which intend to carry out audit of public interest companies and oversight

KPMG Taseer Hadi & Co.

and review of the Quality Assurance Board of the Institute of Chartered Accountants of Pakistan (ICAP).

AOB comprise of seven members including its chairman. The members and the chairman of AOB are appointed by the Federal Government on the recommendation of the nominating committee.

11.2.2 Client feedback

We proactively seek feedback from clients through in-person conversations and third-party surveys to monitor their satisfaction with services delivered. We endeavour to take this feedback and make dynamic changes at both the engagement level and firm level to meet clients' needs

11.2.3 Monitoring of complaints

We have procedures in place for monitoring and addressing complaints received relating to the quality of our work. These procedures are detailed in our general terms of business.

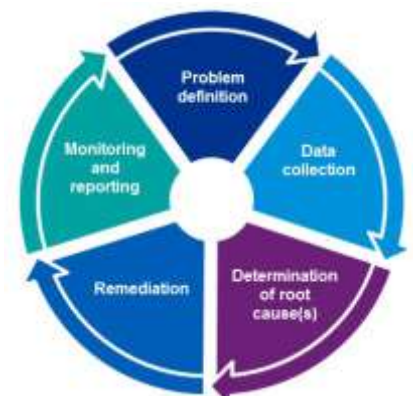
11.3 Perform root cause Analysis (RCA)

KPMGTH conducts Root Cause Analysis in respect of audit quality issues

The Global RCA 5 Step Principles are as follows:

It is the responsibility of all KPMG firms to perform RCA and thereby identify and subsequently develop appropriate remediation plans for the audit quality issues identified.

KPMGTH's Head of Audit is responsible for audit quality including the remediation of audit quality issues. The firm's Risk Management Partner monitors the remediation plan(s) implementation.



KPMG Taseer Hadi & Co.

12 Financial Information

12.1 KPMG Network Revenue

Aggregated revenues generated by KPMG firms from EU and EEA Member States resulting from the statutory audit of annual and consolidated financial statements was 2.2 billion euros during the fiscal year ending 30 September 2022. The EU/EEA aggregated statutory audit revenue figures are presented to the best extent currently calculable and translated at the average exchange rate prevailing in the 12 months ended 30 September 2022.

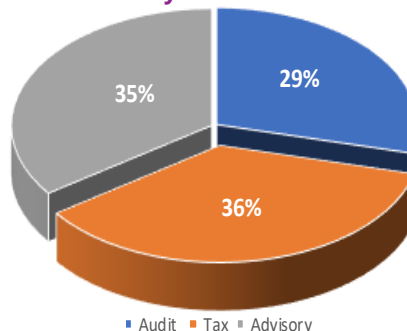
12.2 KPMGTH Revenue

KPMGTH revenues from the statutory audit for the year ended June 30, 2023

	USD (Thousand)
■ Assurance service fee billed to non-EU audit client listed in EU i.e. Oil and Gas Development Company Limited (OGDCL)	28
■ Assurance service fee from other clients	3,228
■ Non-assurance service fee billed to non-EU audit client listed in EU i.e. OGDCL	0
■ Non-assurance service fee from other clients	7,999
	11,254

Exchange rate of USD 1 = PKR 285.9905 as on 30 June 2023 (Source: www.sbp.org.pk)

Revenue - For the year ended 30 June 2023





KPMG Taseer Hadi & Co.

13 Partner remuneration

13.1 Partners' profit share

The majority of partners are equity partners and their share of profit is determined at the time of admission as a full partner or when there is a change in the partnership. The compensation of other partners is determined by the senior partner and approved by partnership. A proportion of profit is offered as incentive to partners performing exceptionally. The Board decides on the proportion of profit to be offered as incentive and evaluates partner's performance. Audit partner remuneration setting takes no account of the level of non-audit services provided to the partner's audit clients.

Partner's compensation takes into account quality and ethics incidents.

13.2 Drawings

During the year, Partners working within KPMGTH received monthly drawings, and from time to time, additional profit distributions. The level and timing of the additional distributions are decided by the board, taking into account cash requirements for operating and investing activities. All such drawings and profit distributions to partners represent payments on account of current year profits.



KPMG Taseer Hadi & Co.

14 Network arrangements

14.1 Legal structure

Legal structure

KPMGTH and all other KPMG firms are party to membership and associated documents, the key impact of which is that all KPMG member firms in the KPMG global organization are members in, or have other legal connections to, KPMG International Limited, an English private company limited by guarantee.

KPMG International Limited has been the coordinating entity for the overall benefit of the KPMG member firms. It does not provide professional services to clients. Professional services to clients are exclusively provided by member firms.

KPMG is the registered trademark of KPMG International and is the name by which the member firms are commonly known. The rights of member firms to use the KPMG name and marks are contained within agreements with KPMG International.

KPMG is the registered trademark of KPMG International and is the name by which the member firms are commonly known. The rights of member firms to use the KPMG name and marks are contained within agreements with KPMG International.

Pursuant to their membership agreements with KPMG International, member firms are required to comply with KPMG International's policies, including quality standards governing how they operate and how they provide services to clients to compete effectively. This includes being professionally and financially stable; having an ownership, governance and management structure that ensures continuity and stability and long-term success; and being able to comply with policies issued by KPMG International, adopt global strategies, share resources (incoming and outgoing), service multi-national clients, manage risk, and deploy global methodologies and tools.

KPMG International Limited and the KPMG member firms are not a global partnership, single firm, multinational corporation, joint venture, or in a principal or agent relationship or partnership with each other. No member firm has any authority to obligate or bind KPMG International Limited, any of its related entities or any other member firm vis-à-vis third parties, nor does KPMG International Limited or any of its related entities have any such authority to obligate or bind any member firm.

Further detail on the revised legal and governance arrangements for the KPMG global organization can be found in section 'Governance and leadership' of the 2022 [KPMG International Transparency Report](#).

KPMG Taseer Hadi & Co.

The name of each audit firm that is a member of the organization and the EU/EEA countries in which each firm is qualified as a statutory auditor or has its registered office, central administration or principal place of business are available [link](#).

14.2 Responsibilities and obligations of member firms

Under agreements with KPMG International, member firms are required to comply with KPMG International's policies and regulations including quality standards governing how they operate and how they provide services to clients to compete effectively. This includes having a firm structure that ensures continuity and stability and being able to adopt global strategies, share resources (incoming and outgoing), service multi-national clients, manage risk, and deploy global methodologies and tools.

Each KPMG firm takes responsibility for its management and the quality of its work.

Member firms commit to a common set of [KPMG Values](#).

KPMG International's activities are funded by amounts paid by member firms. The basis for calculating such amounts is approved by the KPMG International Global Board and consistently applied to the firms. A firm's status as a KPMG firm and its participation in the KPMG global organization may be terminated if, among other things, it has not complied with the policies set by KPMG International or any of its other obligations owed to KPMG International.

14.3 Professional Indemnity Insurance

Insurance cover is maintained in respect of professional negligence claims. The cover provides a territorial coverage on a worldwide basis.

14.4 Governance structure

The key governance and management bodies of KPMG International are the Global Council, the Global Board, and the Global Management Team.

Global Council

The Global Council focuses on high-level governance tasks and provides a forum for open discussion and communication among member firms.

Among other things, the Global Council elects the Global Chairman and also approves the appointment of Global Board members. It includes representation from 56 KPMG firms that are "members" of KPMG International Limited as a matter of English law.

KPMG Taseer Hadi & Co.

Global Board

The Global Board is the principal governance and oversight body of KPMG International. The key responsibilities of the Global Board include approving global strategy, protecting and enhancing the KPMG brand and reputation, overseeing the Global Management Team and approving policies with which KPMG firms are required to comply. It also approves the admittance or termination of KPMG firms to/from the global organization.

It is led by the Global Chairman, Bill Thomas, and also includes the Chairman of each of the regions (the Americas; Asia Pacific (ASPAC); and Europe, the Middle East, and Africa (EMA)), and a number of members who are also member firm Senior Partners. The list of current Global Board members is set out on the Leadership page of KPMG.com <https://home.kpmg/xx/en/home/about/who-we-are/our-leadership.html>.

Global Board committees

The Global Board is supported in its oversight and governance responsibilities by several committees, including:

- Executive Committee;
- Governance Committee;
- Global Quality, Risk Management and Reputation Committee; and
- Global Audit Quality Committee.

The overarching responsibility of the Global Audit Quality Committee is to strive for globally consistent audit quality across all firms and to oversee those KPMG International activities which relate to improving and maintaining the consistency and quality of audits, assurance engagements and the system of quality management provided by KPMG firms.

Global Management Team

The Global Board has delegated certain responsibilities to the Global Management Team. These responsibilities include developing the global strategy by working together with the Executive Committee, and jointly recommending the global strategy to the Global Board for its approval. The Global Management Team also supports KPMG firms in their execution of the global strategy and KPMG International decisions and policies by member firms, including holding them accountable against their commitments.

KPMG Taseer Hadi & Co.

It is led by the Global Chairman, Bill Thomas. The list of current Global Management Team members is available in the [Leadership](#) section on KPMG.com.

Global Steering Groups

There is a Global Steering Group for each key function and infrastructure area, chaired by the relevant member of the Global Management Team and, together they assist the Global Management Team in discharging its responsibilities. They act under delegated authority from the Global Board and oversight by the Global Management Team (GMT). Under the oversight of the GMT, they promote the execution of the global strategy and compliance with KPMG International decisions and policies by member firms.

In particular, the Global Audit Steering Group and Global Quality & Risk Management Steering Group work closely with regional and member firm leadership to:

- Establish, and ensure communication of, appropriate audit and quality/risk management policies;
- Establish and support effective and efficient risk processes to promote audit quality;
- Promote and support strategy implementation in member firms' audit functions, including standards of audit quality; and
- Assess and monitor audit quality issues, including those arising from quality performance and regulatory reviews, and focus on best practices that reduce audit quality findings.

The roles of the Global Audit Steering Group and the Global Quality & Risk Management Steering Group are detailed in section 'Governance and leadership' of the 2022 [KPMG International Transparency Report](#).

Each firm is part of one of three regions (the Americas, ASPAC, and EMA). Each region has a Regional Board comprising a regional chairman, regional chief operating officer, representation from any sub-regions, and other members as appropriate. Each Regional Board focuses specifically on the needs of member firms within their region and assists in the implementation of KPMG International's policies and processes within the region.

Further details about KPMG International including the governance arrangements for the year ending 30 September 2022, can be found in section 'Governance and leadership' of the 2022 [KPMG International Transparency Report](#).

KPMG Taseer Hadi & Co.

15 Statement by the Board of KPMG Taseer Hadi & Co. on the effectiveness of quality controls and independence

The measures and procedures that serve as the basis for the system of quality management for KPMGTH outlined in this report aim to provide a reasonable degree of assurance that the statutory audits carried out by our firm comply with the applicable laws and regulations. Because of its inherent limitations, the system of quality controls is not intended to provide absolute assurance that non-compliance with relevant laws and regulations would be prevented or detected.

The Board of KPMGTH has considered:

- The design and operation of the quality control systems as described in this report
- The findings from the various compliance programs operated by our firm (including the KPMG International review programs as described in section 11.1.2 and our local compliance monitoring programs); and
- Findings from regulatory inspections and subsequent follow up and/or remedial actions.

Taking all of this evidence together, the Board of KPMGTH confirms with a reasonable level of assurance that the systems of quality control within our firm have operated effectively in the year to 30 June 2023.

Further, the Board of KPMGTH confirms that an internal review of independence compliance within our firm has been conducted in the year to 30 June 2023.

Amir Jamil Abbasi
Senior Partner

For and on behalf of
KPMG Taseer Hadi & Co., Karachi



Contact us

Karachi Office

Sheikh Sultan Trust Building No.2
Beaumont Road
Karachi – 75530, Pakistan
Telephone +92 21 3713 1900
Telefax +92 21 3568 5095
eMail pk-fmkpmgpakistan@kpmg.com

Lahore Office

351 – Shadman-1
Main Jail Road
Lahore 54000, Pakistan
Telephone +92 42 111-KPMGTH (576484)
Telefax +92 42 3742 9907
eMail pk-fmkpmgpakistan@kpmg.com

Islamabad Office

Sixth Floor, State Life Building No. 5
Jinnah Avenue, Blue Area
Islamabad, Pakistan
Telephone +92 51 282 3558
Telefax +92 51 282 2671
eMail pk-fmkpmgpakistan@kpmg.com

Some or all of the services described herein may not be permissible for KPMG audit clients and their affiliates or related entities.

home.kpmg/pk



© 2023 KPMG Taseer Hadi & Co., a Partnership firm registered in Pakistan and a member firm of the KPMG global organization of independent member firms affiliated with KPMG International Limited, a private English company limited by guarantee. All rights reserved.

The information contained herein is of a general nature and is not intended to address the circumstances of any particular individual or entity. Although we endeavour to provide accurate and timely information, there can be no guarantee that such information is accurate as of the date it is received or that it will continue to be accurate in the future. No one should act on such information without appropriate professional advice after a thorough examination of the particular situation.

The KPMG name and logo are trademarks used under license by the independent member firms of the KPMG global organization.